



# South Shields Photographic Society & Digital Group

Centennial Year Celebrating 100 Years 1913 - 2013

## D. M. Cox

Dorothy Mary Cox 1922-1996



Dorothy Cox

Born and lived in South Shields throughout her life.

After leaving school, worked as a tracer at Hawthorn Lesley's until shortly after marrying George in 1945. Later worked for the church of England Morel Welfare, firstly as a secretary, and then as a Social Worker, until retiring in 1982. Dorothy had a great love for nature and the countryside, and like her husband George loved the Lake District and Weardale, along with walking, birdwatching, and of course photography, with many of her photographs featuring sheep!

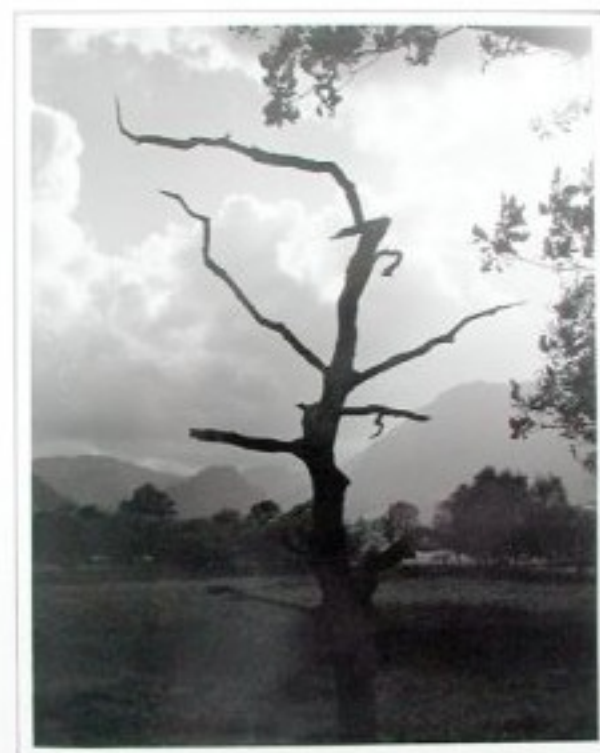
Was a committee member and past Chairman of the Friends of Bedes World, during the time the museum was established. Interested in all periods of history and joined the Richard the Third Society. Dorothy had a great love of reading and poetry, and also displayed a talent as an artist and calligrapher. Her calligraphy talent was called upon to decorate the photographic certificates won by the members of the photographic society in the photo competitions, some of which Dorothy had won herself during her membership.



Tuppin Time (1994 2nd place)



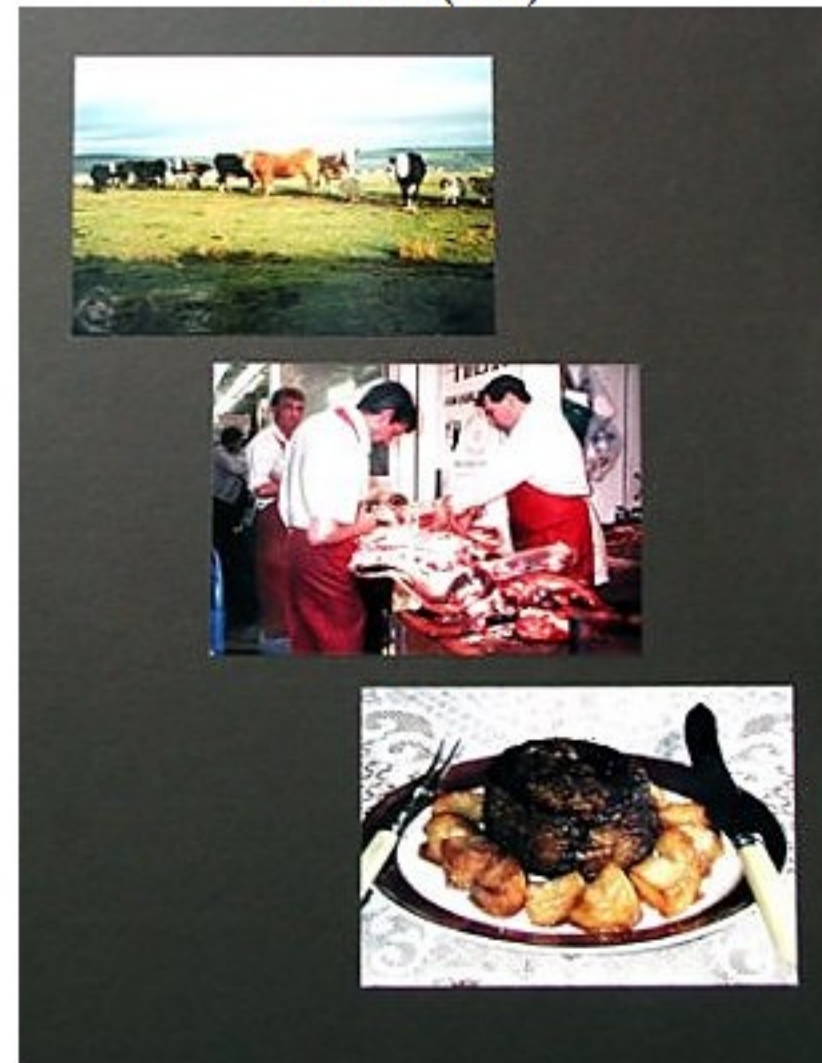
Morning Light Bassenthwait (1994)



Defiance (1992)



Woolies



Prime Beef